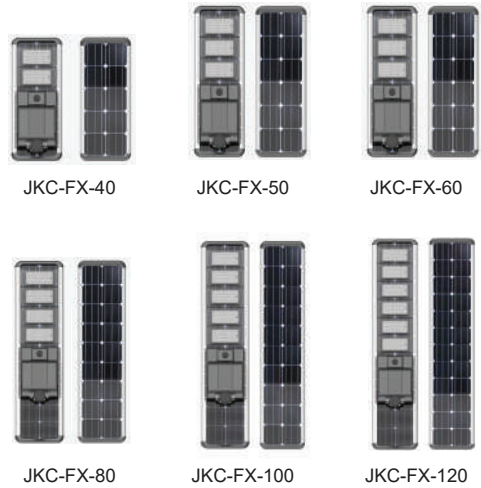




CONCEPT LIGHTING  
SDN BHD



## Integrated Solar LED Street Lighting

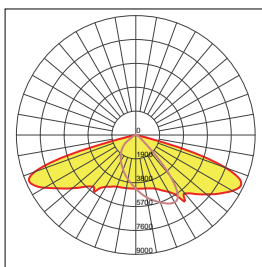
### APS-FX

#### Luminaire Characteristic

Casing Material	: Aluminium Alloy
Solar Panel	: Imported High Efficiency Monocrystalline Silicon
Battery	: LiFePO4 Battery
Light Distribution	: Type II
Ingress Protection	: IP65 Optical Compartment
Color Temperature	: 2700 - 6500K
Working Temperature	: -25°C ~ +65°C
Charging Time	: 4.5 Hours - 6 Hours
Discharge Time	: Over 3 nights
Mounting Recommendation	: 4M - 12M
Motion Sensor Setting	: Night Sensor + Microwave Motion Sensor

Product Code	LED Power	LED (Bridgelux)	Efficacy	Lumen	Battery	Solar PV	Dimension (mm)
JKC-FX-40	40W	96PCS	170 lm/W	68,00lm	12.8V 28AH	18V 65W	848.6*385.5*265.9
JKC-FX-50	50W	144PCS	170 lm/W	85,00lm	12V 36AH	18V 70W	1077.8*385.5*265.9
JKC-FX-60	60W	144PCS	170 lm/W	102,00lm	12V 42AH	18V 80W	1077.8*385.5*265.9
JKC-FX-80	80W	192PCS	170 lm/W	136,00lm	12V 57AH	18V 100W	1548.68*385.5*265.9
JKC-FX-100	100W	240PCS	170 lm/W	170,00lm	12V 63AH	18V 130W	1863*385.5*265.9
JKC-FX-120	120W	288PCS	170 lm/W	204,00lm	12V 72AH	18V 140W	1863*385.5*265.9

#### Light Distribution Curve

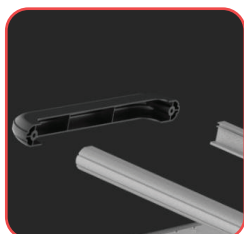


\* Size and weight may have a tolerance of +/-10%

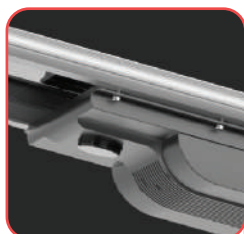


CONCEPT LIGHTING  
SDN BHD

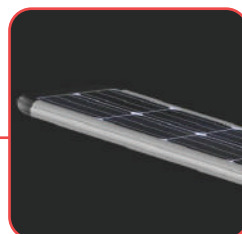
## Features



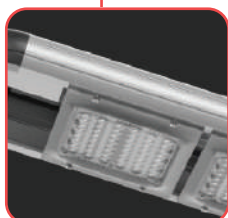
High strength aluminum alloy frame



Sensor + Magnet switch + Indicators for all status



High efficiency monocrystalline solar cells: >21%



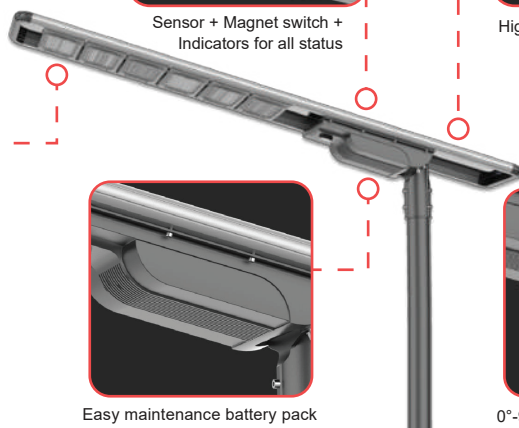
220 lm/W high efficiency led



Easy maintenance battery pack

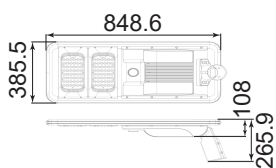


0°-90° angle adjustable bracket

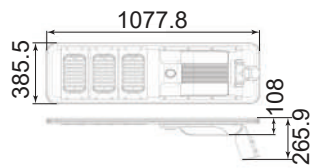


## Product Size

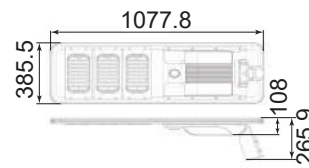
JKC-FX-40



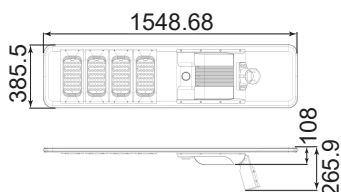
JKC-FX-50



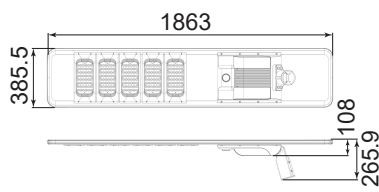
JKC-FX-60



JKC-FX-80



JKC-FX-100



JKC-FX-120

